

Enablers of Landscape Approaches

Wednesday 22 June: 13:00-13:55 (55 min)

With Speakers:



Willem Ferwerda
CEO and Founder
| Commonland



Gregory Jean
Standards and
Learning Manager
| Better Cotton



Prमित Chanda
Global Director
Textiles | IDH - The
Sustainable Trade
Initiative



Paul Chatterton
Lead and
Founder |
Landscape
Finance Lab



Anita Chester
Head of
Materials
| Laudes
Foundation

Facilitator:

Why landscapes?



52%
of our agricultural soils
are already degraded



70%
increase in food
production is
needed by 2050



Average global
temperatures are
1.1°C
Higher than pre-
industrial times



40%
of the world
population are
suffering from water
scarcity.



47mn
hectares of forest have
been lost in the last
two decades



Over
35,765
species were
threatened with
extinction in 2020



46%
of the world's
population was living
on less than
\$5.50/day

What are landscapes?



Holistic

Place-based

Systems-based

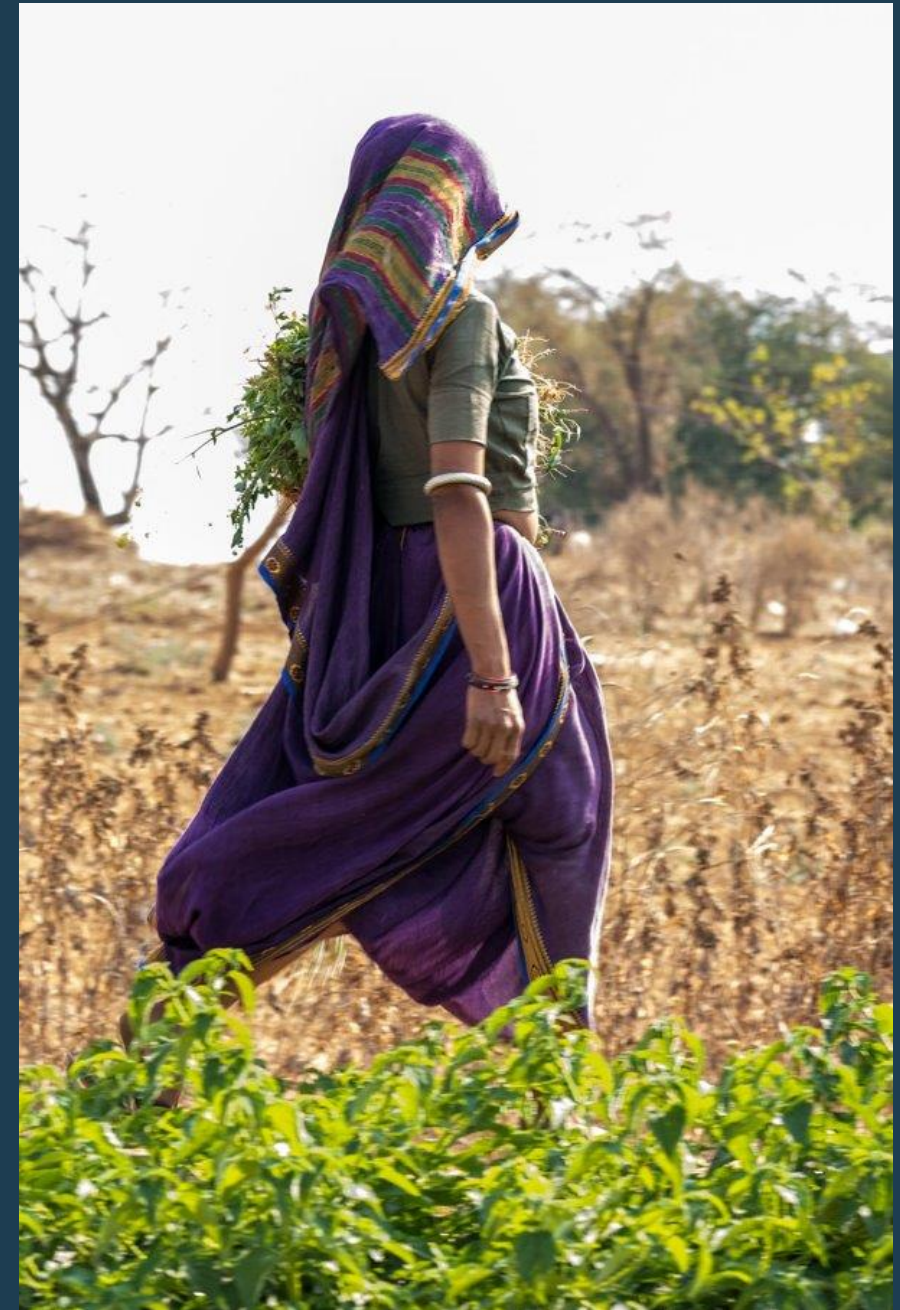
Policy and government's critical

Creates ecosystem-based impact

Key enablers of landscapes



Landscapes present a global opportunity for radical change





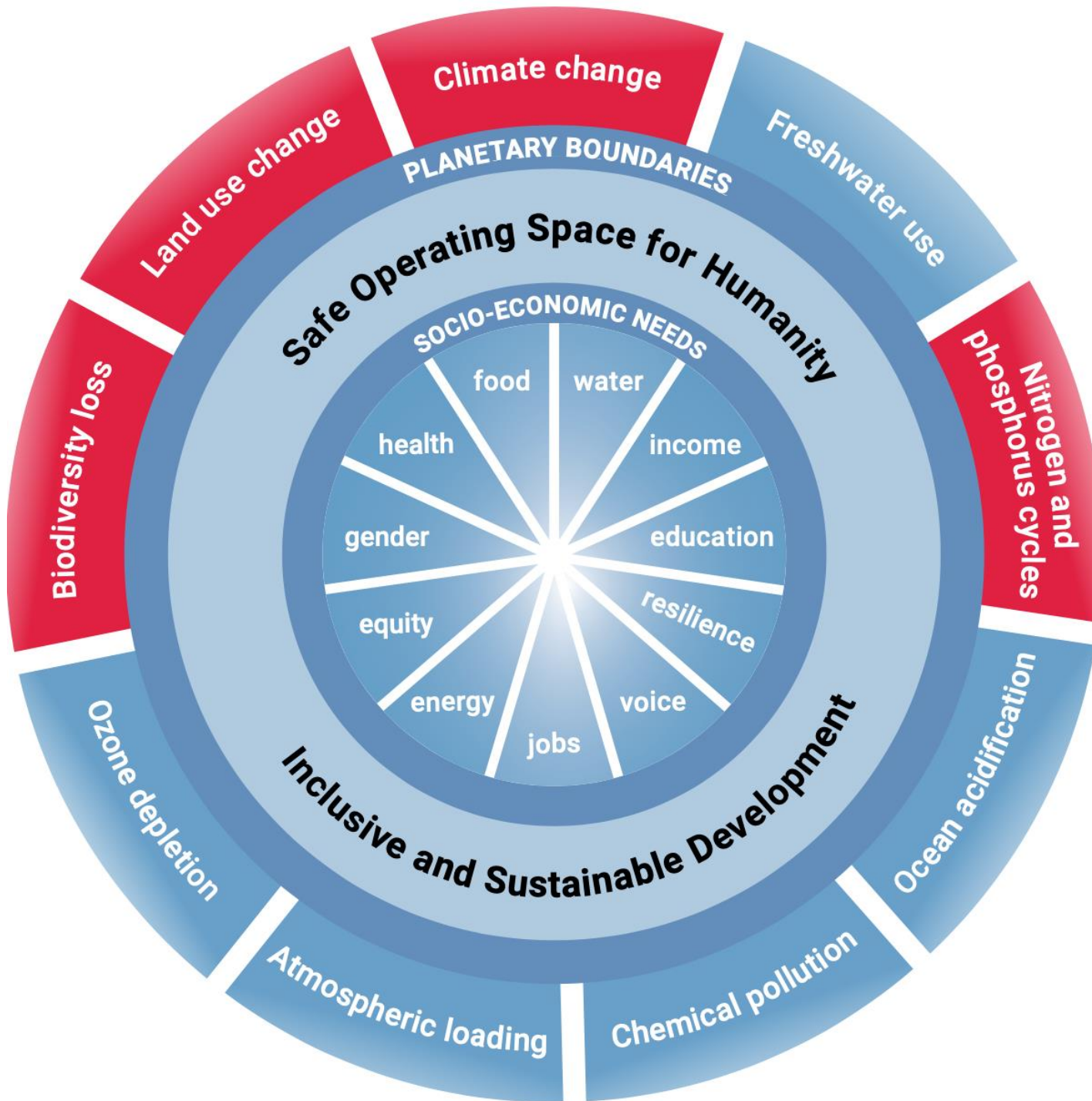
The 4 Returns Framework

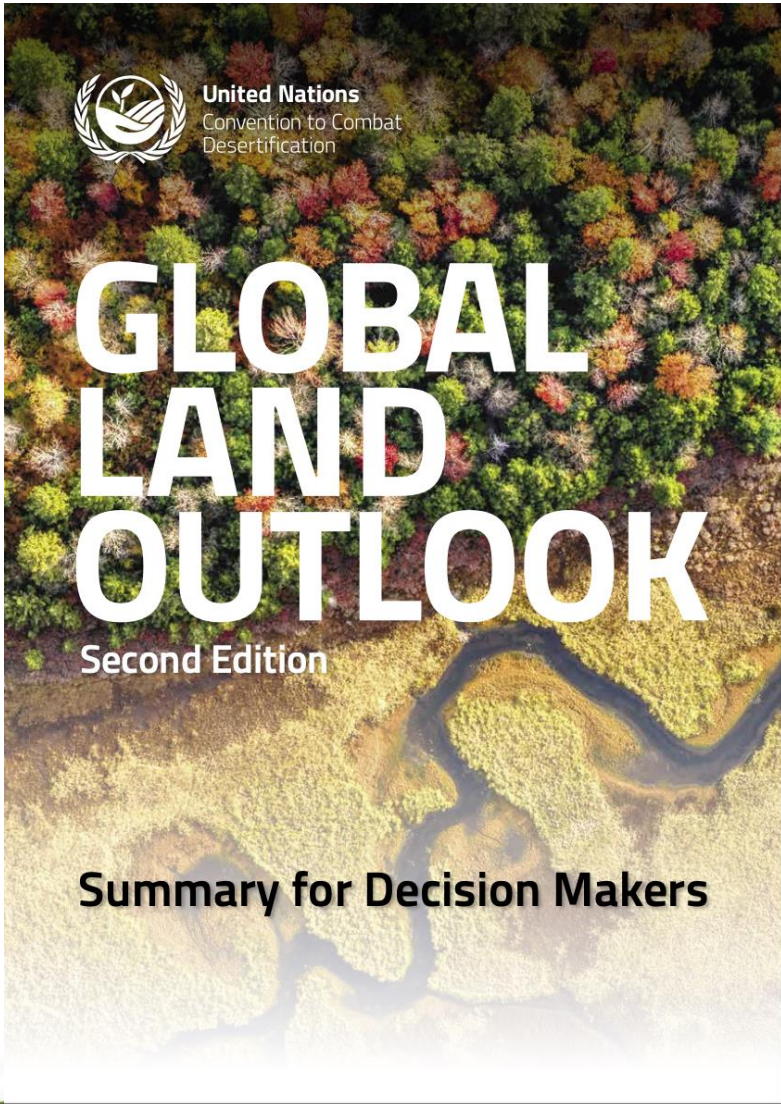
A practical proven approach on Integrated Landscape Management

22 June 2022

Willem Ferwerda
CEO Commonland

Fellow Business and Ecosystems at Rotterdam School of Management (Erasmus Univ.)
team lead at IUCN Commission on Ecosystem Management





Momentum for a ‘Landscape Restoration Industry’

Momentum: Climate, Food, Land & Biodiversity crises:
UNCCD COP15. CBD, COP27, UN Food Summit, UN Decade on Ecosystem Restoration, ESG

Increase of **isolated restoration, conservation, regenerative agri. projects** that can not be compared and learnings can not be exchanged

Increase of funding by governments, DFIs, philanthropy, business, carbon and investors

Decisive moment: need for agreement on the use of a **coherent narrative** within a tested **framework** based on realistic KPIs

Towards a restoration industry: Scaling up large landscape restoration projects and pipeline development for investors & governments

Business as usual continues and isolated projects do not achieve systemic change at landscape/ecosystem scale, not sustainable



Making theory work through a practical framework and language that unites stakeholders and business

Moving away from **maximizing Return on Investment** per hectare to **maximizing 4 returns** per landscape (min. 100,000 ha)



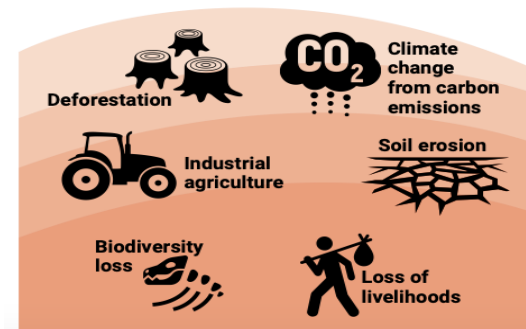
COMMONLAND

ECOSYSTEM DEGRADATION LEADS TO 4 LOSSES:

- Loss of purpose or hope
- Loss of employment and security
- Loss in biodiversity, soil & water
- Loss of economic activity

POOR LAND AND WATER MANAGEMENT

leads to drought, soil erosion and desertification

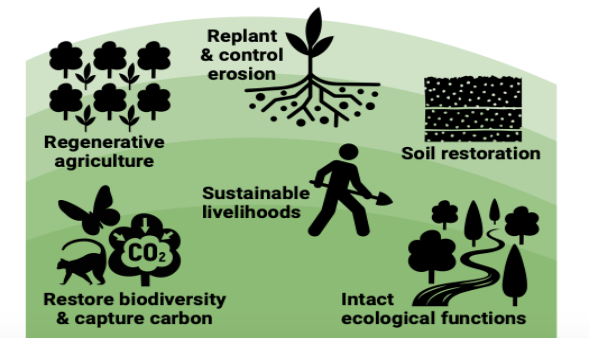


ECOSYSTEM RESTORATION LEADS TO 4 RETURNS:

- Return of inspiration
- Social returns
- Natural returns
- Financial returns

ECOSYSTEM RESTORATION

restores soil and water cycles and reverses desertification



Source: 4 Returns. RSM-Erasmus Univ. IUCN CEM 2015

4 returns are delivered by 3 landscape zones during a minimum period of 20 years



Economic Zone: Urban areas, infrastructure. Delivering high & sustainable economic productivity. Monocultures are part of the economic zone.

Combined Zone: Restoring biodiversity, soil through regenerative agriculture & agroforestry delivering sustainable landscape productivity.

Natural zone: Restoring the ecological foundation and biodiversity.

3 landscape zones works with all stakeholders



Example from Tamil Nadu (India)
farmers and their landscape zoning

Economic Zone: village, processing, trading, communities

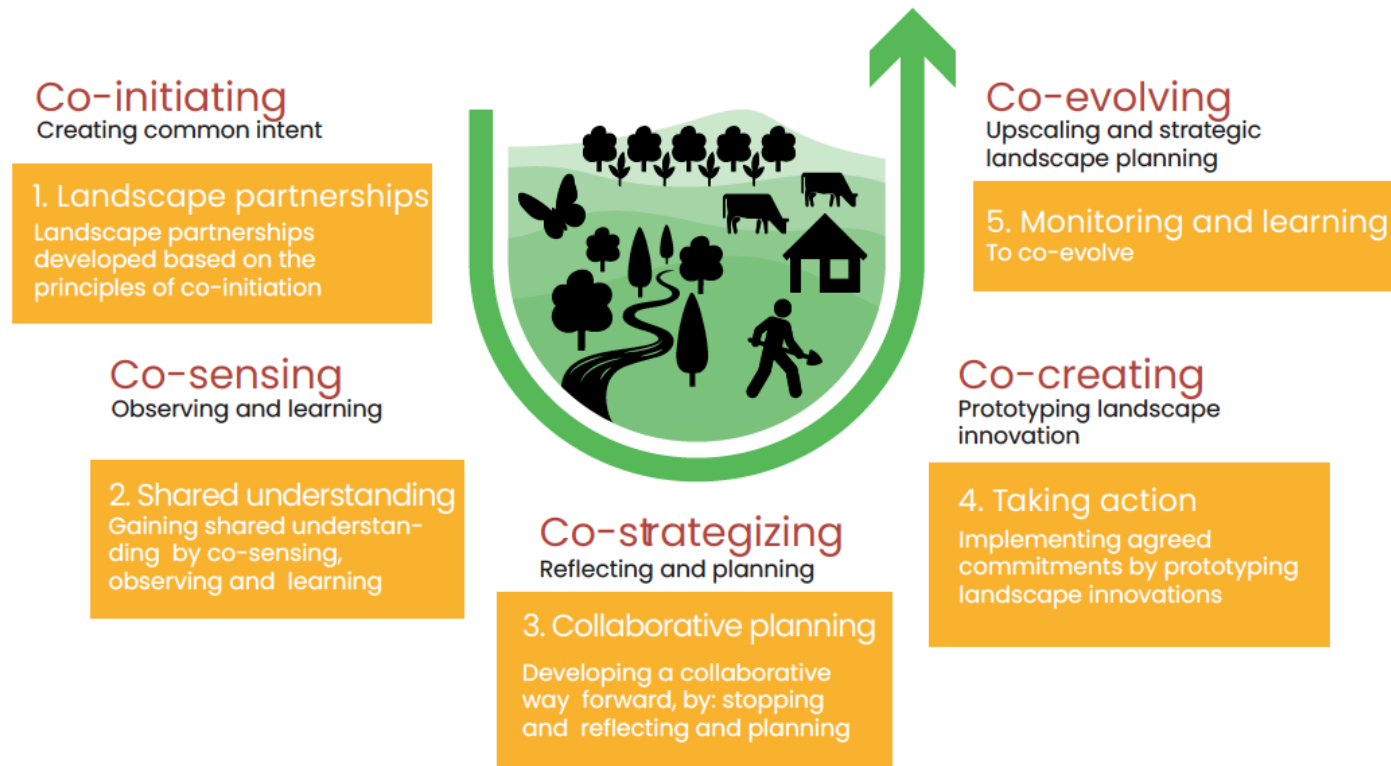
Combined Zone: regenerative agro-forestry of coconut, rice, mango, sugarcane, flowers, etc.

Natural zone: water, wetlands and forests

Credit: Dhan Foundation

We structured stakeholder alignment through 5 process elements based on co-creation with Theory U

- ❖ The **Theory U** is a practical method for guiding awareness-based system change within a landscape partnership
- ❖ This image shows how to move through the **5 elements** whilst applying the principles of Theory U



4 Returns Framework for Landscape Restoration

Process 5 Elements

Our landscape restoration process consists of 5 elements.

- Establishing a **landscape partnership**
- Reach a **shared understanding**
- Building a **landscape plan**
- Ensure **effective implementation**
- Develop **monitoring and learning**

Impact 4 Returns

Our landscape restoration framework delivers 4 types of returns to the landscape and its stakeholders.

- 

Return of Inspiration
Opening people's eyes to the possibility of a better future
- 

Social Returns
Creating jobs, businesses, networks, and social prosperity
- 

Natural Returns
Restoring the health, resilience and prosperity of landscapes
- 

Financial Returns
Realising long-term, sustainable, and local income

Landscapes 3 Zones

For successful landscape restoration we distinguish, restore and connect 3 types of zones.

Natural Zone

Regenerating a landscape's ecological foundation by restoring and protection of biodiversity within natural ecosystems such as wetlands, grasslands and forests

Combined Zone

Combining food, fibre and biodiversity productivity through regenerative agriculture, agroforestry and soil restoration.

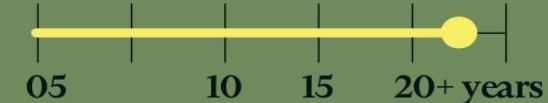
Economic Zone

Delivering sustainable economic productivity with dedicated areas for activities that create value, typically concentrated in urban areas, infrastructure and processing.



Time 20+ years

Successful systematic landscape restoration takes one generation, or 20 years.



A minimum of 20 years, or one generation, is needed to successfully implement large-scale integrated landscape management.

Monitor & Evaluate KPIs

4 Returns Outcomes

Return of Inspiration

Outcome Indicator

Inspired & Connected people: Combined number of people aware of the opportunity of landscape restoration, participated in the 4 returns approach, and start 4 returns initiatives.

Domains	Indicator examples
Awareness	Number of people demonstrating positive attitudes and beliefs towards landscape restoration and its practices (# of people exposed through on- and offline interactions)
Participation	Number of people participating in landscape restoration initiatives and/or in 4 returns restorative businesses (# of people engaged)
Replication	Number of landscape restoration initiatives and/or enterprises being established inside or outside the respective target landscapes (# of new businesses, initiatives, or projects created/piloted)
Most Significant Change stories*	MSC Stories show that by Return of Inspiration people have a deeper connection to their landscape.

Employment	Number of direct/indirect jobs created/supported* at the venture/landscape level (# jobs created/supported)
Entrepreneurship	Number of people whose entrepreneurial and professional skills have been improved (# of participants in entrepreneurial and skills trainings, surveys)
Network	Number of different groups connected to convey knowledge, information, and other support for innovation (# of network partners, e.g. Universities, community centres, Business schools, government etc.)
Most Significant Change stories*	MSC Stories show that by Return of Social Capital people have a deeper connection to their landscape.

*We recommend also looking at jobs supported, instead of just created, because you also want to improve the quality of existing jobs.

4 Returns Outcomes

Return of Natural Capital

Outcome Indicator

Improved holistic management: Number of hectares (# ha) under improved management (aggregating the progress made on soil, biodiversity, water, and other)

Domains	Indicator examples
Biodiversity	Hectares where abundance and diversity of species are improved/maintained, and/or number of practices initiated to improve and maintain biodiversity (# pro-biodiversity ha / # pro-biodiversity practices)
Soil Health	Soil Organic Matter, pH, Cation-exchange capacity (CEC) values increase over 5 year time periods and visual assessments of soil structure and water drainage levels of the soil improve (change in SOM, pH, CEC, soil structure, and/or water drainage)
Water	Improved water flow and / or improved water quality (m3 or % or other relevant unit)
Carbon	Carbon is being sequestered into the landscape (tonnes of CO2 sequestered)
Most Significant Change stories*	MSC Stories show that by return of Natural Capital people have a deeper connection to their landscape.

Business development	Business cases are being identified, set up and/or tested** (# cases)
Profitability	Positive cash flows have been generated for the restorative (matured) business case(s) and/or there is room for reinvesting in the business (positive cash flow and/or reinvestment potential)
Investors	IRR for investors is met for their respective thresholds (IRR met)
Farmer Income	Total increase in annual farmer income and/or beneficial cost/benefit ratio in favour of the farmer (amount or ratio)
Most Significant Change stories*	MSC Stories show that by return of Financial Capital people have a deeper connection to their landscape.

**We recommend to also include cases that have become inactive to keep track of your business innovation journey over time.

Spain: 1 million hectares



PROCESS: 5 ELEMENTS		
Element	indicator	Status
LANDSCAPE PARTNERSHIP	Stakeholder map	→
	Multi stakeholder agreement	→
SHARED UNDERSTANDING	Nat/socl capital	→
	Drivers analysis	→
VISION & PLANNING	Vision	→
	Action plan	→
	Spacial plan	→
TAKING ACTION	Actions resourced	↻
	Effective implementation	→
IMPACT AND LEARNING	Monitoring system	↻
	Learning strategy	→

→ In place → Underway ↻ Adapted

IMPACT: 4 RETURNS			
Returns	Indicator	Target	Status
INSPIRATION	No of members	<2.000	350
	No partnerships	<60	10
	Inspiration project	<10	3
SOCIAL	No. farmers in transition	1,600	180
	% Next generation farmers and local entrepreneurs	95	75
	% Farmers reporting high quality of life	50	36
NATURAL	Ha combined zone under restoration	<70K	14K
	% of priority eco-corridors under restoration	60%	5%
	Ton/yr of CO2 sequestration	86K	16K
FINANCIAL	Pipeline development	100	18
	4 Returns businesses	15	3

AREAS: 3 ZONES

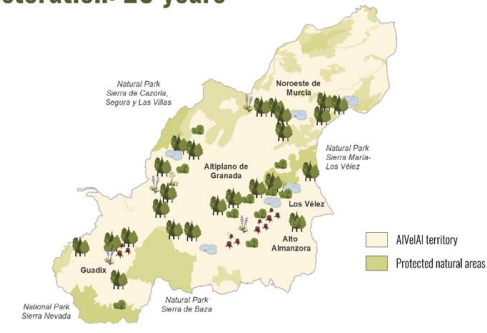
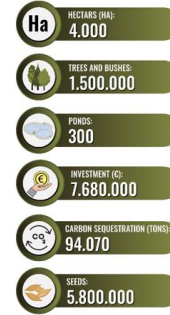
- Natural Zone - 575.000 ha
- Combined Zone - 410.000 ha
- Economic Zone - 15.000 ha



Spain: Visualizing 20+-year goals by zone

- ▶ Landscape analysis
- ▶ Future vision for the landscape
- ▶ 4 Returns Strategy
- ▶ Achievements to-date
- ▶ Detailed roadmap
- ▶ Overview funding needs

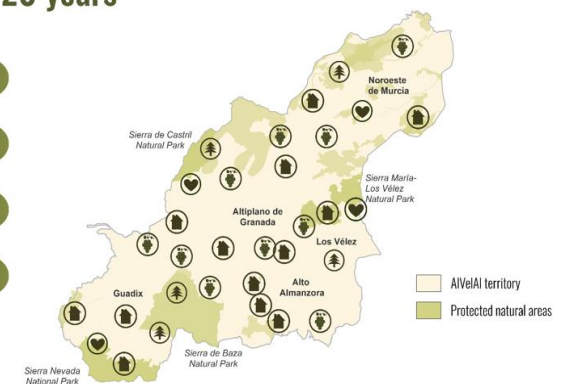
Natural zone restoration: 20 years



Combined zone: 20 years



Economic zone: 20 years



Benefits of 4 Returns Framework



- The 4 Returns framework is **universally understood** to build a resilience landscape
- Guidance for long term landscape vision where **regenerative cotton** can be integrated in the combined zone
- Serves as a **bridge** between bottom up (actions on the land) and top-down business and institutional policies.
- The 20+ years timeline **avoids overpromising** and greenwashing.
- Upfront investment in landscape partnerships will **bring down long term risks**.
- It is aligned with BTI criteria, ESG, SDGs, UN Decade on Ecosystem Restoration and Rio UN conventions (Climate, Biodiversity, Land Degradation)
- M & E may serve as a potential standard for a future **Landscape Asset Class**



crop protection



water



soil health



biodiversity



fibre quality



decent work



management system

Landscape Finance

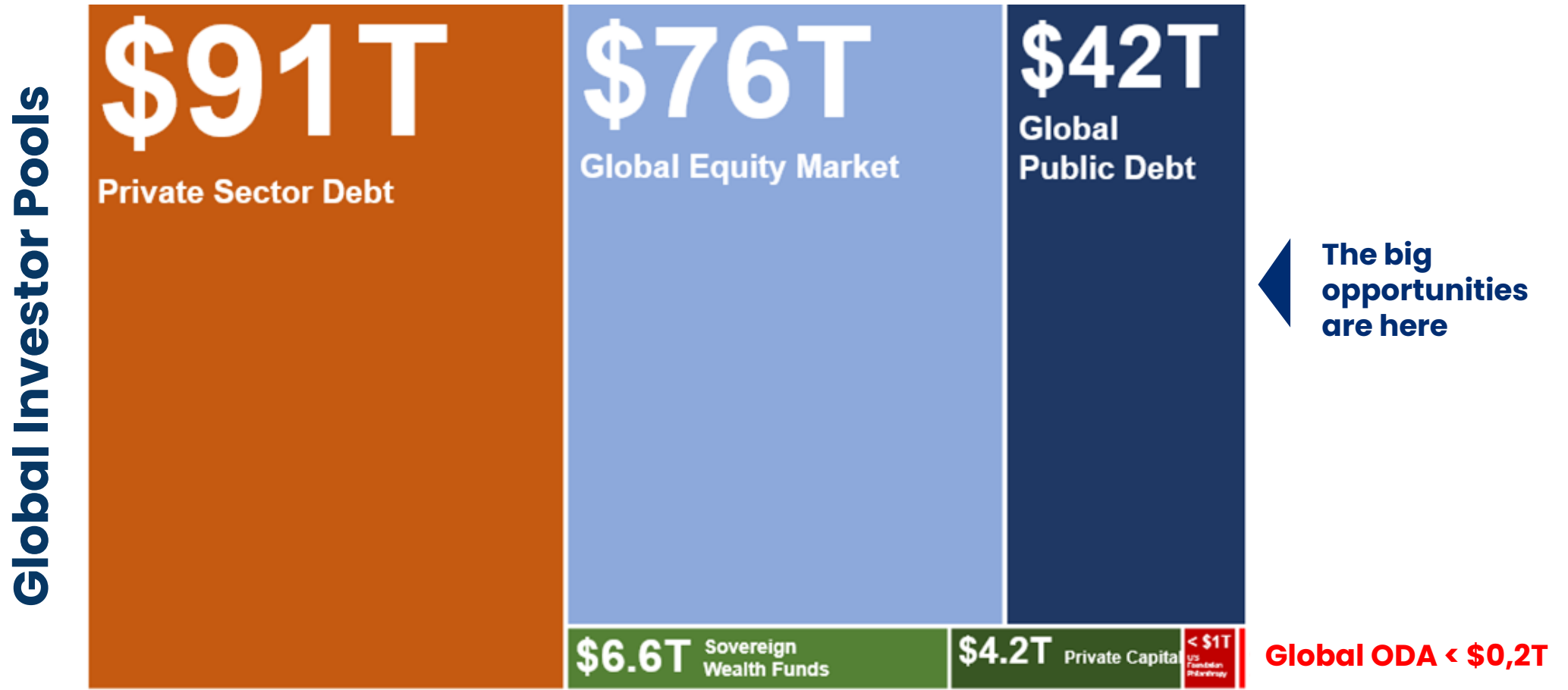
Better Cotton Conference
Malmö
24 June 2022



LANDSCAPE
FINANCE LAB

Landscape Finance:

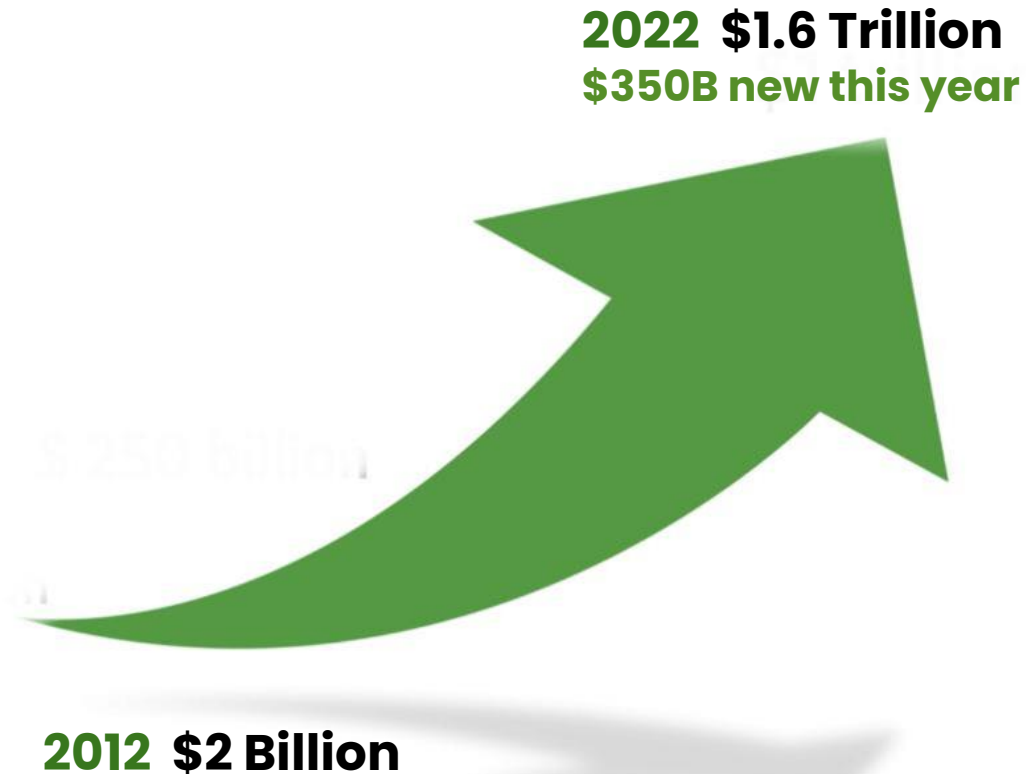
Engaging commercial finance for nature and regeneration



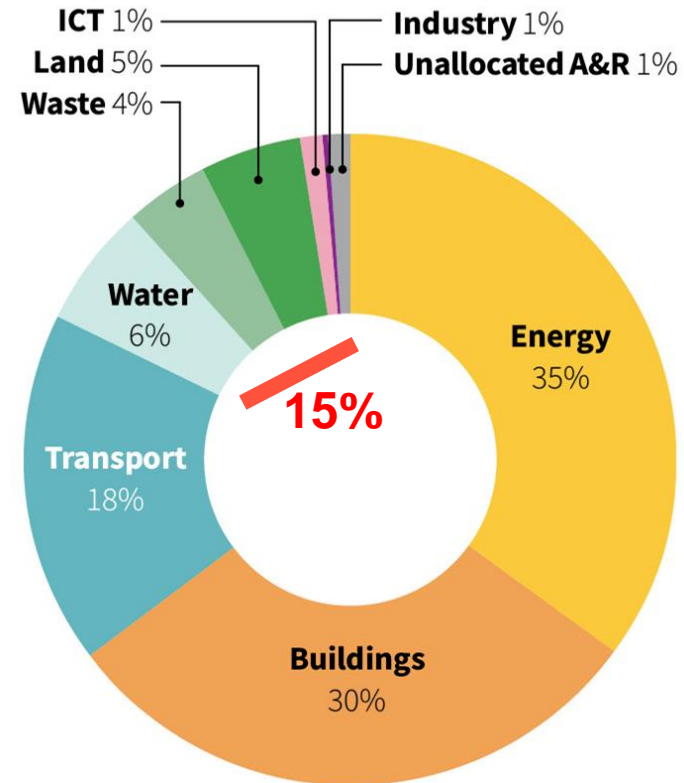
Most sustainability funds
are sourced here

Green Bonds

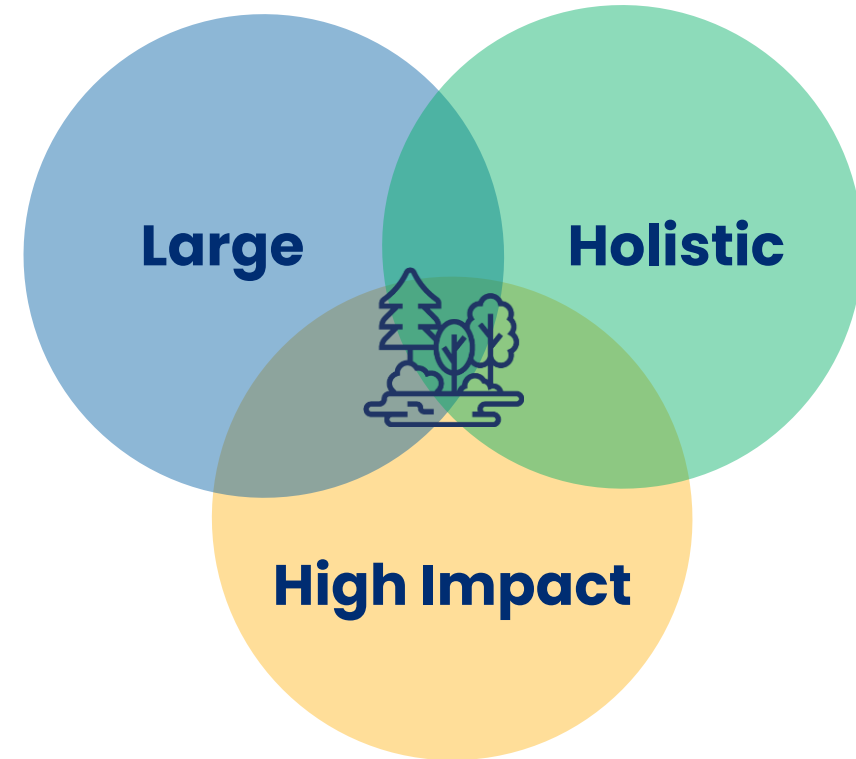
Large finance for land use is rapidly growing



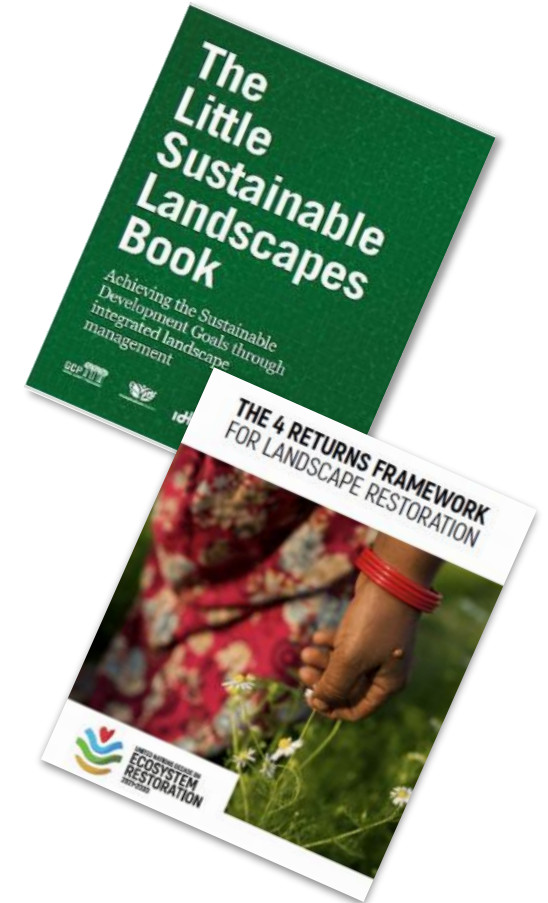
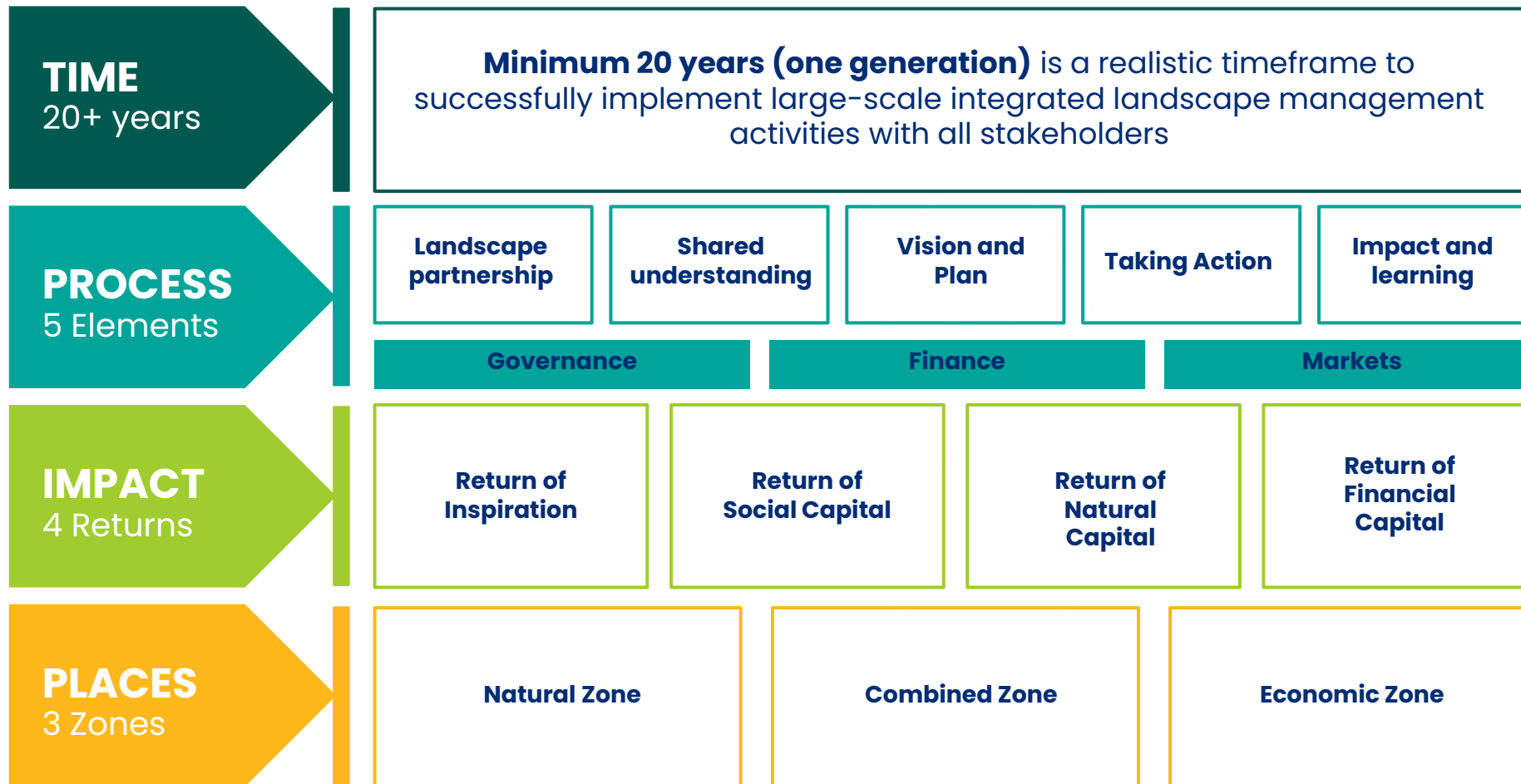
Use of Green Bonds 2021



Landscapes: An integrated solution



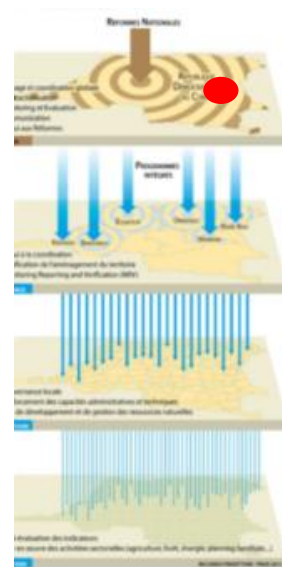
Landscape methodology



Landscape finance examples

Forest carbon

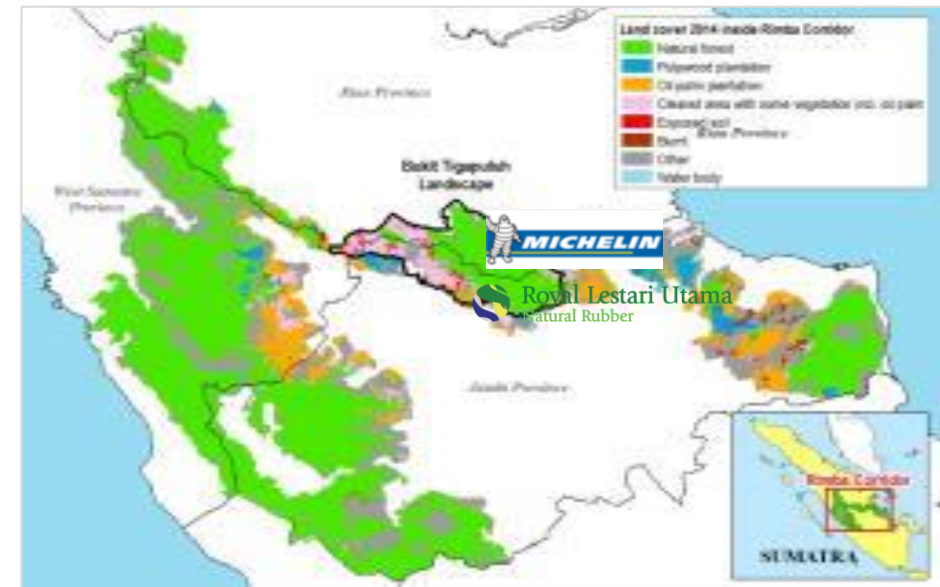
DRC Mai Ndombe Province Emission Reduction Program



- USD 170 M investment
- 29 MtCO₂e ERs across 13 M hectares
- 1.2 M ha reduced impact forestry
- 2 M ha improved agriculture
- 6 M ha biodiversity corridor

Landscape sourcing

Indonesia Jambi Tropical Landscape Finance Facility



- USD 215 M in two tranches
- 400,000 M ha corridor
- Tiger, orangutan and elephant
- Focus on wildlife friendly rubber

Landscape finance examples

Reef resilience

Fiji Great Sea Reef Resilience Program / Matanataki



- Ensuring resilience of the third longest barrier reef in the world
- \$50 M private investment and business incubation system
- \$30 M public investment GCF



Peatland finance

Scotland The Flow Country



- 400,000 M ha peatland system
- Twice the carbon content of all UK forests
- Focus on carbon, World Heritage branding and green business

Building investment funds

Dutch Fund for Climate and Development



- **€160 M fund**
- **Built on 4 Returns methodology**
- **Supporting landscape level implementation in 10 countries**
- **Investing in 35 NBS projects**



Investments at landscape level

NATURE BASED SOLUTIONS

PHILANTHROPIC AND GOVERNMENT

Grant Projects

COMMERCIAL

Bankable Projects

RESULTS BASED

Performance Projects

€1–50M each

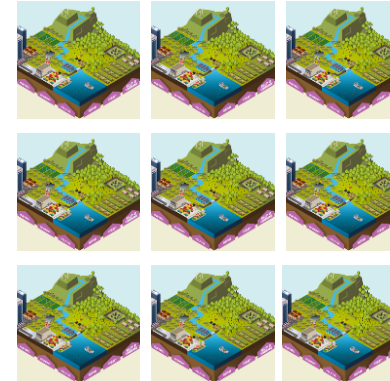


LANDSCAPE INSTRUMENTS



€50–200M each

LANDSCAPE INVESTMENT FUNDS



€100M–1B each

THEMATIC FUNDS

Forest landscape restoration

WASH / Catchment

Energy

€50–€500M each

Landscape Scale



Benefits

- Risk and cost reduction
- Larger finance
- Shared value and synergies
- Regulatory solutions
- More coherent impact tracking
- Stronger stories and branding

Challenges

- Time consuming
- Costly at early stages
- Complex
- Still evolving as a methodology



Paul Chatterton
Lead and Founder
e: paul@landscape.org

Thank you



Enablers of Landscape Approaches

IDH's Production, Protection, Inclusion (PPI) approach to achieve an inclusive goal and inspire sustainable landscape management.



Agricultural products are grown sustainably, nature can flourish, and communities prosper



Long-lasting and stable partnerships and cooperation that outlast political cycles



Private and financial sectors enable and finance change towards enhanced sustainability



Strengthening Landscape Governance

Multi-stakeholder coalition | Commitments | Enabling policies | Compacts | Monitoring



Connecting Demand with Supply

Global and local demand | Verified Sourcing Areas



Catalysing New Sources of Finance

Technical Assistance | Investable Projects | New Finance Instruments



Implementation of PPI



SUSTAINABLE PRODUCTION

- Increased adoption of sustainable production and regenerative agri-practices
- Reduction in greenhouse gas emissions



INCLUSION

- Improved incomes
- Gender equity in the supply chain
- Improved livelihoods for tribal communities



PROTECTION & RESTORATION

- Improved access to and management of water
- Restored soil health
- Preserving biodiversity

Working together – through a design framework



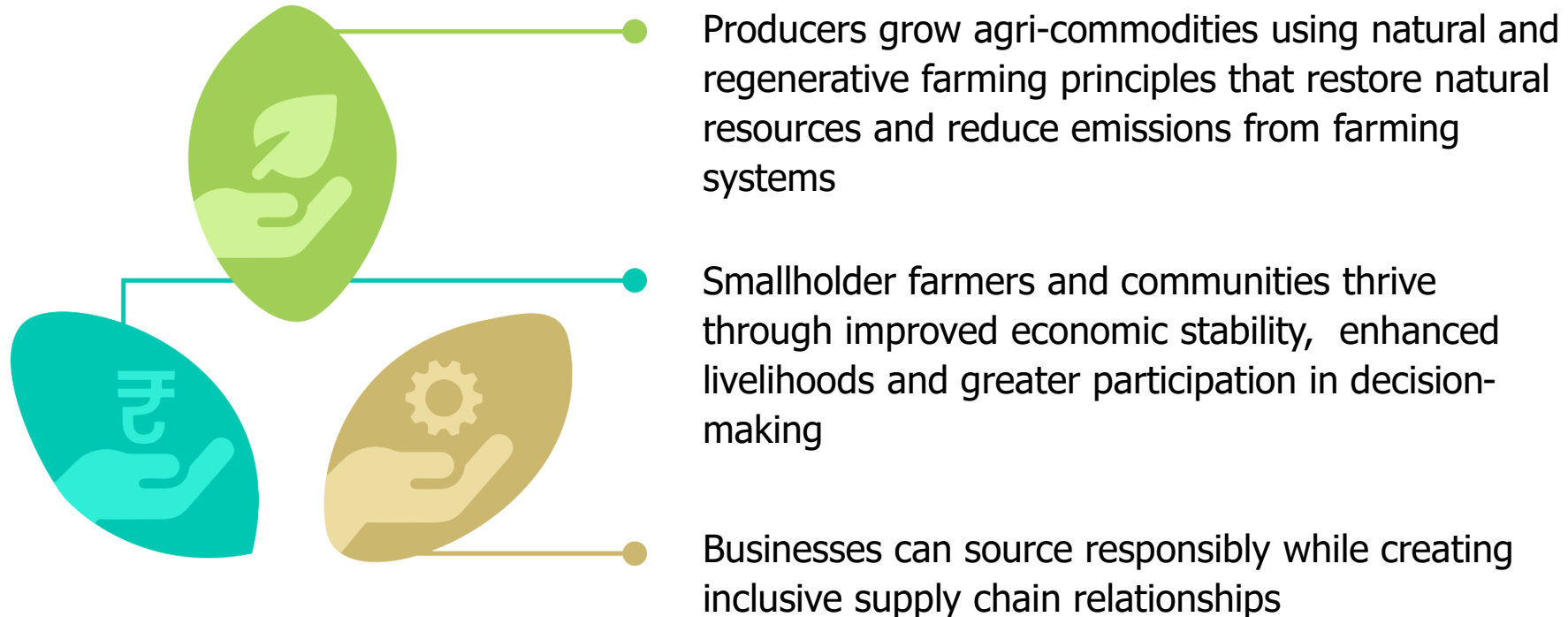
REGENERATIVE PRODUCTION LANDSCAPE COLLABORATIVE

Scaling regenerative and restorative agricultural practices in Madhya Pradesh, India to benefit **people, nature and economy**



RPL Collaborative

Originally founded by **Laudes Foundation, IDH The Sustainable Trade Initiative and WWF India**, the Collaborative aims to catalyse and scale a model where:



5 Year MoU with the Government of Madhya Pradesh & RPLC

Collaborative & Compacts Launch

Working with the producers community



- **45+ organisations** across Private sector, government, CSOs producers' organization representative
- **14 Compact Partners (8 Private Sector from cotton, spices, horticulture)**

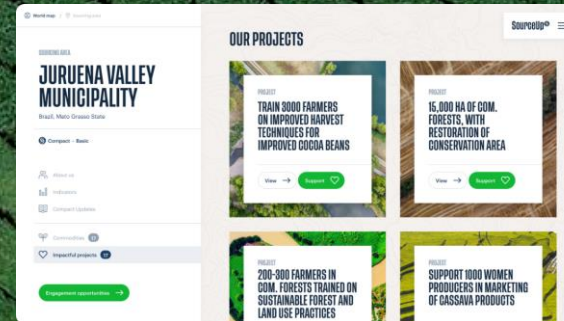
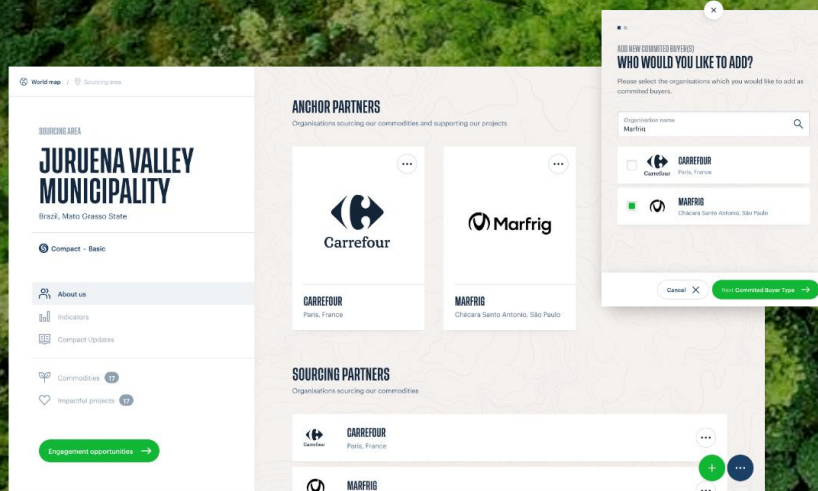
SourceUp®

The cooperation platform for supply chain sustainability
changemakers

www.sourceup.org

A PLATFORM THAT CONNECTS

- AN USER INTERFACE WHICH STIMULATES INTERACTION
- PROJECTS
- TRANSPARENT & VISUAL PROGRESS



A new market mechanism to lift the sustainability
level of entire landscapes

It makes all the difference to have this involvement with the field, to really understand the complexity of the production chain until it reaches the top



LUCIO VICENTE
Head of Sustainability at Grupo Carrefour, Brasil

Global Steering Committee



Development Partners



Funding Partners



www.sourceup.org



Better Cotton Conference

Adaptation to Landscape
approach (ATLA)

22 June 2022



ATLA project in a nutshell

- **Component 1:** Development of strategic roadmap for Better Cotton Standard System adaption to landscape approach
- **Component 2:** Pilot projects
 - Explore Better Cotton Standard system contribution to landscape management in the context of the Buyuk Menderes Project, Turkey.
 - Develop a stakeholder analysis and engagement strategy as part of a regional jurisdictional approach in Punjab, Pakistan



ATLA pilot project #1

Buyuk Menderes Basin, Turkey



Size
25 000km²
Population
2.5 Million
River Length
548 km

Target Key Biodiversity Areas (KBAs)

Bafa Lake Nature Park
potential Ramsar Site, Important Bird Area









Buyuk Menderes Delta National Park
potential Ramsar site, Important Bird Area

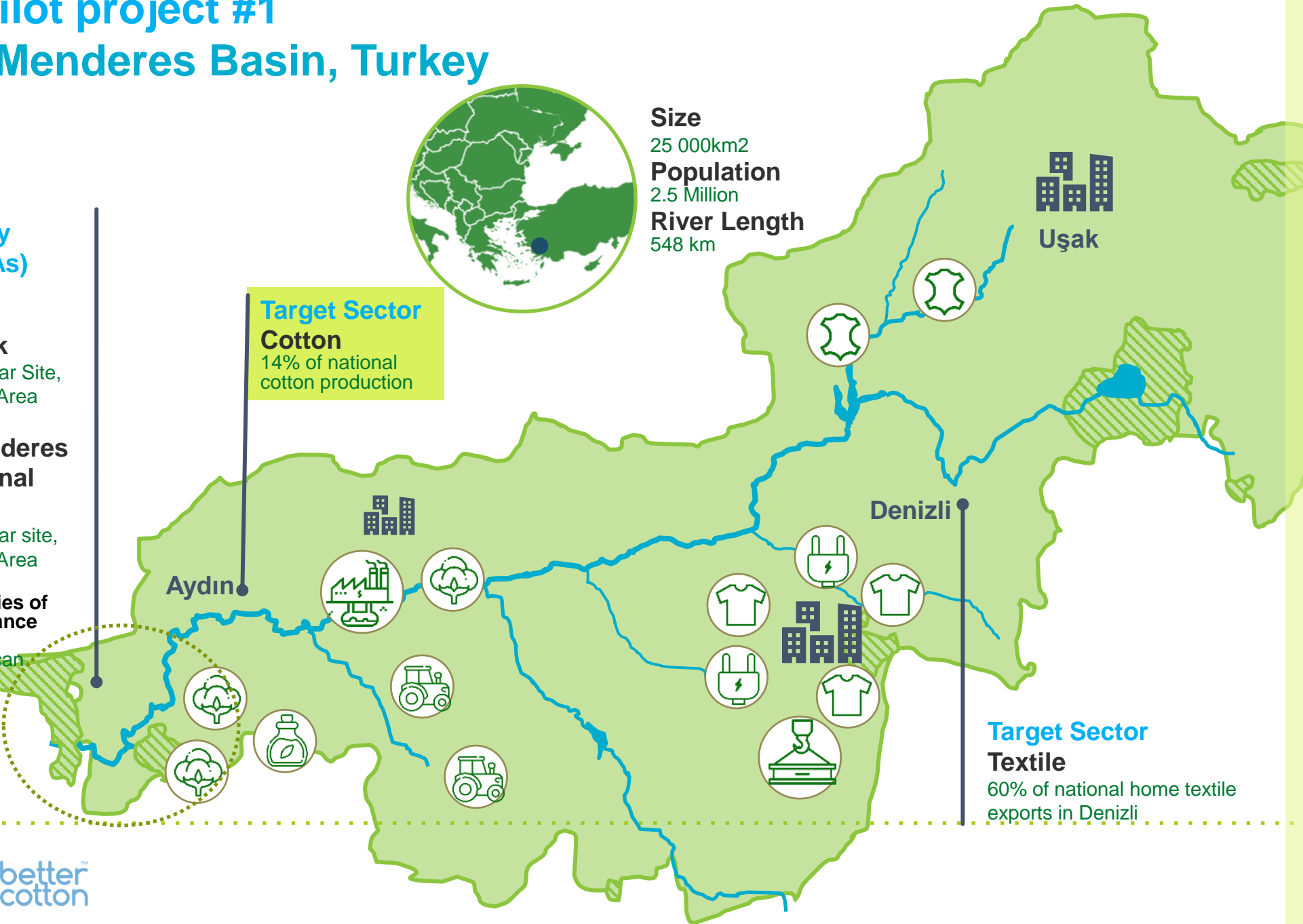
Home to species of global importance
Dalmatian pelican
European Eel
Eurasian otter

Target Sector Cotton
14% of national cotton production

Target Sector Textile
60% of national home textile exports in Denizli

Key Industries

-  Textiles
-  Agriculture
-  Cotton
-  Tanneries
-  Metal
-  Electrical
-  Olive Oil
-  Geothermal Energy



ATLA pilot project #2

Punjab province, Pakistan



Stakeholder engagement

Stakeholder analysis and mapping

Stakeholder engagement strategy

Strategies / Action Plans or Roadmap

Goals, Targets, Strategies and Joint action plan developed and implemented by NSC members



Formation of 'National Steering Committee (NSC)'

Memorandum of Understanding signed with participants

NSC 1st Meeting

Monitoring & Evaluation

M&E framework designed to measure NSC progress against joint action plan

KEY STRATEGIC RECOMMENDATIONS

- 🌱 Prioritize Better Cotton investment in Landscape initiatives/projects
- 🌱 Define scope and scale of landscape programmes
- 🌱 Build or contribute to project multistakeholder partnerships
- 🌱 Explore further adaptation of the Better Cotton Standard System to LS/JA
 - Principles and Criteria
 - Monitoring and Evaluation
 - Capacity-building
- 🌱 Develop a value proposition for Brands members to invest in LS/JA projects



Thank you



Cotton +
Climate Action

Thank you

